



The Early Childhood Development (ECD) Centers design and implementation are the result of an holistic approach that aims to catalyze a social change. Carefully integrated with the physical and cultural landscape of the Country, they are thought of as material and systemic ecosystems balancing the relationship between communities and their surroundings.

The centers have been built within 15 different locations: opportunity that gave ASA access to different realities, varying topographic constraints, scarce and limited material resources. Workshops have been organized to involve the communities in design, construction and management phases and to understand the dynamics of the social life in each village. These directly informed the design approach, enhanced the feeling of ownership toward the building, and developed construction skills for further job opportunities.

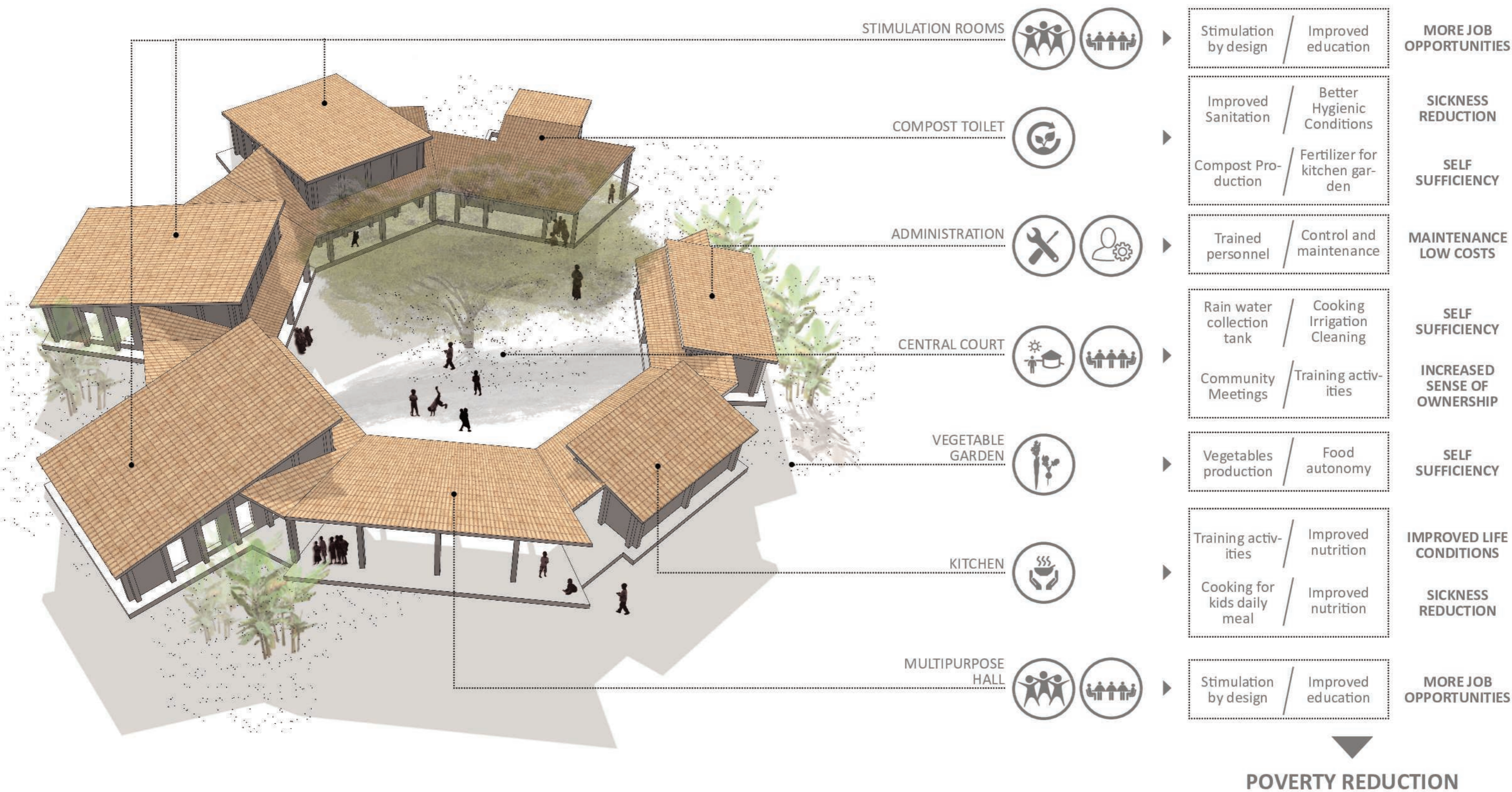
The conceptual approach to the design rests on two pillars: it highlights the role of a central space as catalyst for community gathering; and it conceives a modular structure, where components can adapt to different terrains and situations.

The ECD&F centers are designed to act as education tool: it is scientifically proven that mental stimulation, proper nutrition and proper sanitation are fundamental in children between zero and six to develop thinking, language, emotional and social skills and achieve their full potential as adults.

The different basic elements are small masonry structures, built with locally produced fired bricks, assembled with vertical reinforcement bars. The brick pattern and the multiple openings, placed at different heights, contribute to the sensorial stimulation of small children, while providing natural lighting and cross ventilation. A continuous porch, covered in ceramic tiles, allows for a variety of covered outdoor spaces. The whole compound includes a dedicated area for playgrounds and kitchen gardens, and has an underground tank for rainwater harvesting.

Socially Active Ecosystem ECD Centers for Rwanda

ASA Studio | Active Social Architecture

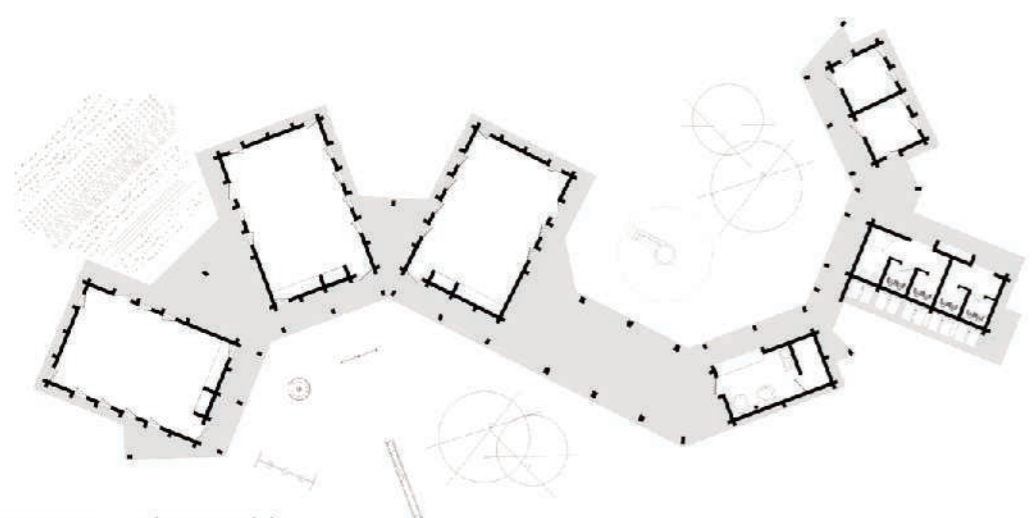


Socially Active Ecosystem
ECD Centers for Rwanda
 ASA Studio | Active Social Architecture

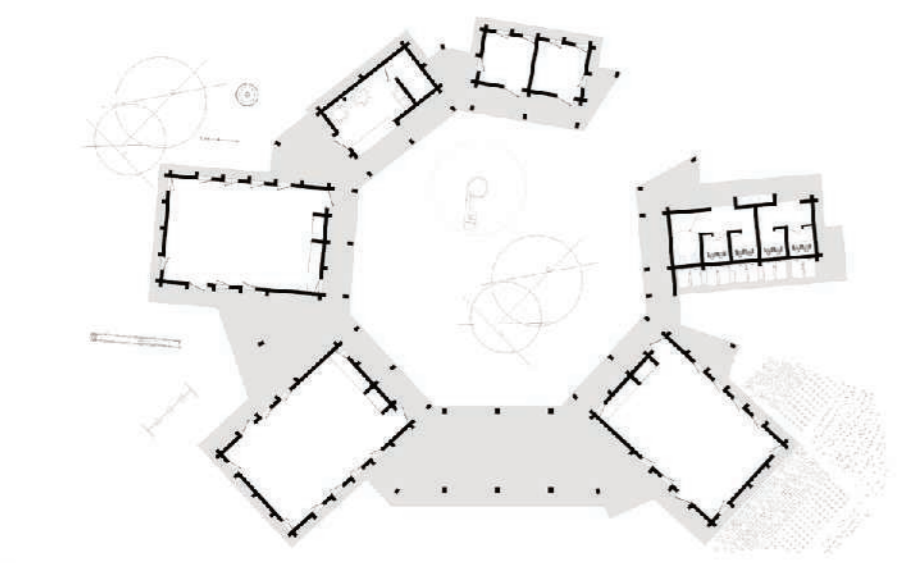


ECD Centers location in Rwanda:

Ngoma	2014
Rwamagana	2014
Gicumbi	2014
Nyamasheke	2015
Nyamagabe	2015
Mageragere	2015
Gakenke	2015
Gikomero	2016
Nyabihu	2016
Ruhango	2016
Ngoma II	2016
Kicukiro	2016
Ngororero	ongoing
Nyanza	ongoing
Rusizi	ongoing



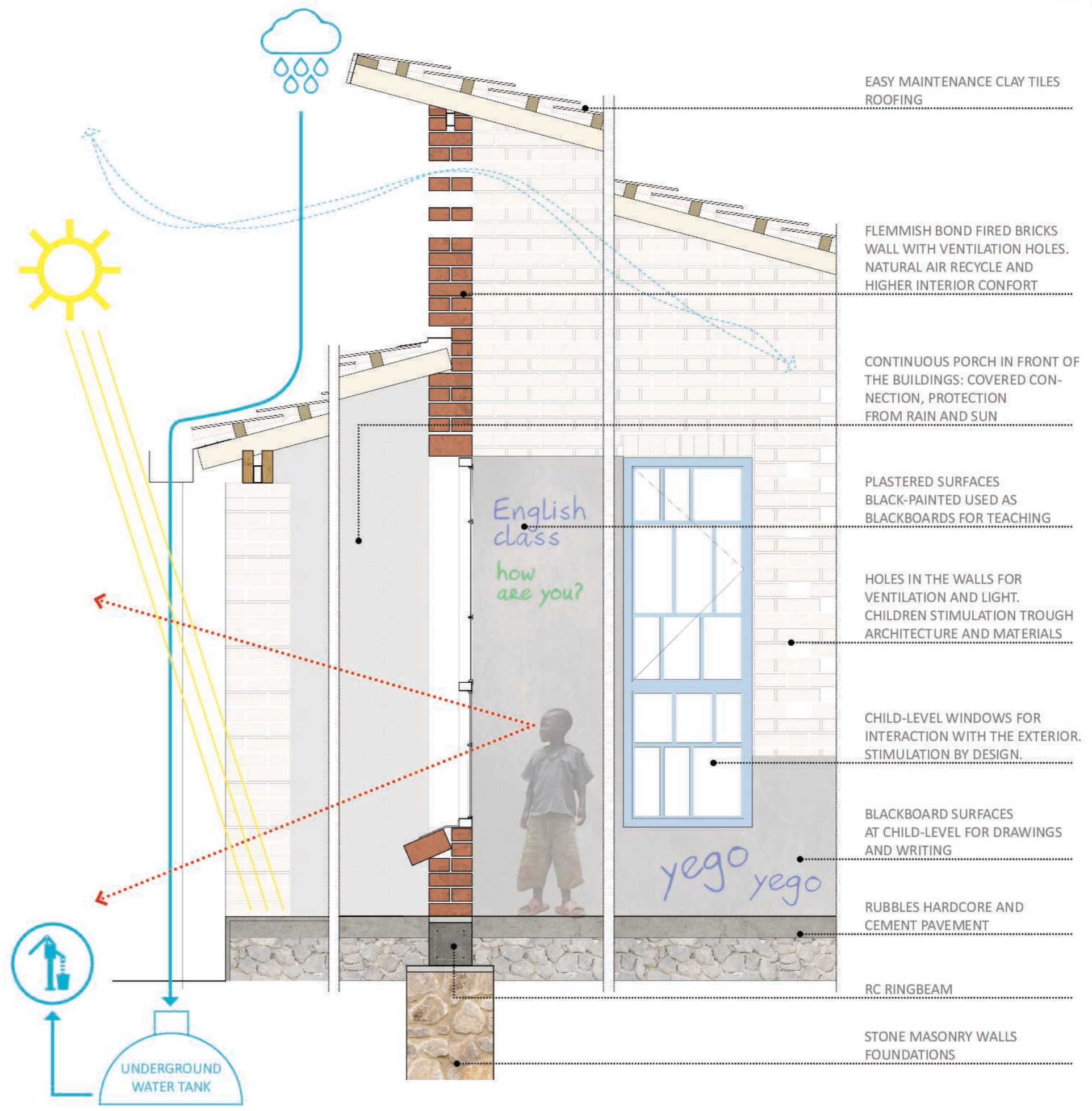
ECD Center - S-shape model



ECD Center - Circular shape model



Socially Active Ecosystem
ECD Centers for Rwanda
 ASA Studio | Active Social Architecture





Empower community - improve construction skills - more job opportunities



Gakenke ECD - in-built furniture - stimulation with colors, light and materials - Stimulation by design - Design as added educator



Nyamasheke ECD - exterior playground equipment designed to stimulate the children - Design as added educator



Kitchen garden - Nutrition program - Training activities - Community engagement



Gikomero ECD construction - local materials and technology



Ngoma ECD - child friendly design - Windows at child size - interaction interior-exterior - Stimulation by design



Nyamagabe ECD - Social value of the ECD. Located in center position easy connected with of neighbor villages



Nyamasheke ECD construction



Rwamagana ECD - flexible interior furniture designed for different activities - blackboards - colors and light



Nyamasheke ECD - Located in very remote area in the middle of a rain forest. The Center serves emarginated communities providing services and education

Socially Active Ecosystem
ECD Centers for Rwanda
ASA Studio | Active Social Architecture